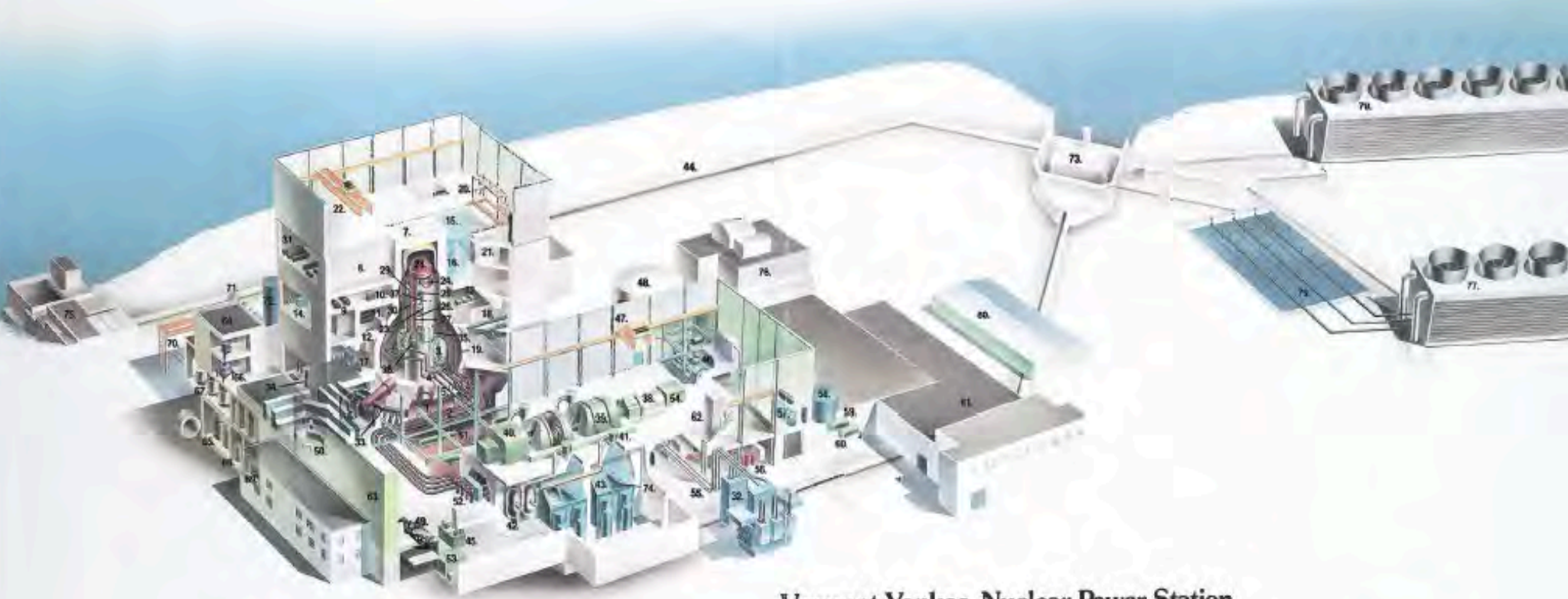


# NorthStar VTY Decommissioning



Vermont Yankee Nuclear Power Station

NDCAP Update 05/13/2024

- |   |                                  |                                   |                                      |
|---|----------------------------------|-----------------------------------|--------------------------------------|
| 1. Torus  | 21. New fuel storage vault       | 41. Intercept valve               | 61. Receiving and stores             |
| 2. Main steam lines                               | 22. Overhead crane               | 42. Moisture separator            | 62. Elevator                         |
| 3. Recirculation pump                             | 23. Biological shield wall       | 43. Main condensers               | 63. Turbine building                 |
| 4. Inboard main steam isolation valve             | 24. Steam dryer                  | 44. Cooling water recirculation   | 64. Rad waste building               |
| 5. Outboard main steam isolation valve            | 25. Steam separator              | 45. Turbine oil tank              | 65. Condensate phase separator tanks |
| 6. Downcomers                                     | 26. Fuel assemblies              | 46. Emergency diesel generators   | 66. Centrifuge                       |
| 7. Shield plug                                    | 27. Reactor vessel               | 47. Overhead crane                | 67. Cask filling area                |
| 8. Dryer/separator storage pool                   | 28. Vessel head                  | 48. Condensate storage tank       | 68. Spent resin tank                 |
| 9. Reactor building cooling water heat exchangers | 29. Main steam outlet            | 49. Feedwater pump                | 69. Waste sludge tank                |
| 10. Reactor building cooling water pump           | 30. Recirculation water outlet   | 50. Control room                  | 70. Traveling hoist                  |
| 11. Reactor water cleanup heat exchanger          | 31. Uninterruptible power supply | 51. High pressure heaters         | 71. Sample tanks                     |
| 12. Reactor water cleanup pump                    | 32. Main transformer             | 52. Main stop valve               | 72. Surge tank                       |
| 13. Vital AC motor generator set                  | 33. Ring header                  | 53. Turbine lube oil storage tank | 73. Discharge structure              |
| 14. Recirculation motor generator set             | 34. RHR service water pump       | 54. Excitation cubicle            | 74. Low pressure heaters             |
| 15. Fuel pool (spent fuel storage)                | 35. Recirculation inlets         | 55. Main generator leads          | 75. Intake structure                 |
| 16. Spent fuel rack                               | 36. Manifold                     | 56. Make-up demineralizers        | 76. Advanced off-gas building        |
| 17. Hydraulic control units                       | 37. Feedwater inlet              | 57. House heating boiler          | 77. West cooling tower               |
| 18. Standby gas treatment                         | 38. Generator                    | 58. Clearwell                     | 78. East cooling tower               |
| 19. Primary containment wall                      | 39. Low pressure turbine         | 59. Acid storage tank             | 79. Spray pond                       |
| 20. Refueling bridge                              | 40. High pressure turbine        | 60. Caustic storage tank          | 80. Warehouse                        |

NorthStar Nuclear Decommissioning Company, LLC

# Simple Priorities



**SAFETY with all we do: Target Zero (  Accidents)**

Radiological, Environmental, Industrial, Nuclear

**Do it right. Do it safe.**



04/24/2024 11:05

# Project Schedule – Overview (Re-Cap)

	2020	2021	2022	2023	2024	2025	2026	2027 thru 2051	2052	
								Partial Site Release		License Termination (ISFSI) Target 12.31.52)
<b>Spent Fuel Management</b>	█	█	█	█	█	█	█	█	Final Site Restoration & License Termination	
<b>Site Restoration &amp; Final Site Survey</b>	█	█	█	█	█	█	█	█		
<b>Large Component Removal</b>	█	█	█							
Reactor Vessel & Internals	█	█	█							
Condenser		█	█							
Large Pumps & Motors (Circ H2O, Recirc, etc)		█								
Main, Start-Up & Aux Transformers			█							
<b>Decontamination &amp; Demolition</b>										
<b>Asbestos &amp; Lead Paint Removal</b>	█	█	█	█	█	█				
Security Structures and Equipment	█	█	█	█	█	█				
Turbine Warehouse	█	█	█							
Aog	█									
Rotors and Storage Structures		█								
Stack		█	█							
Intake		█	█	█	█					
Reactor Building			█	█	█	█	█			
Admin Building				█						
Control Building				█						
Rad Waste					█	█	█			
Discharge					█	█				
Service Building					█					

# Rx Building Checkpoint (Entry/Exit) Relocated to East Side

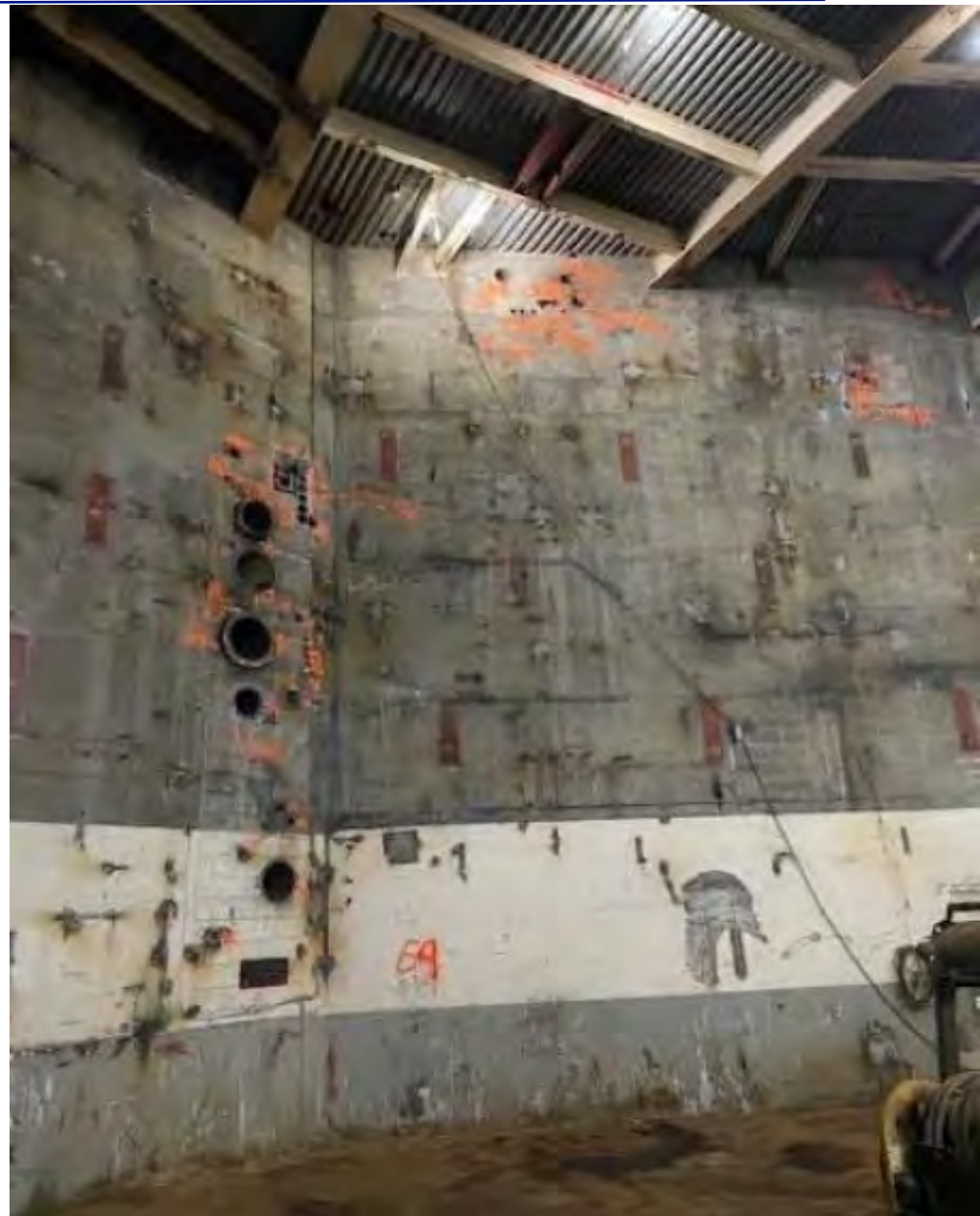
---



# Rx Building Checkpoint (Entry/Exit) Relocated to East Side



# TORUS Basement Area Clean up & Final Decontamination



# Rx Containment (Dry Well) Piping & Components Load Out



# Rx Recirc Piping Shipment Preps





# Cutting and Removing Piping in Rx Containment (Drywell)



(N1) Nozzle Cut at 266' Level Elevation



Rigging Out a Section of Cut Piping

# Rx 252' (Ground Floor Level) Component Removal



# Rx 252' (Ground Floor Level) Component Removal Complete



# Rx 318' (4th Floor) SFP Pump Room Decon Complete



# Demo of Turbine Building and Warehouse Foundations



# Loading TB Rebar for Transport



# Ramp Construction for Rx Building Demo Started



# Ramp Construction for Rx Building Demo Progresses

---





# Ramp Construction for Rx Building Demo Continues



# AOC 5 Excavation



# AOC 5 Excavation



# AOC 7A Excavation



# FOST Foundation Removal During AOC 7A Excavation



# Survey & Mapping of Excavated Spray Pond Discharge Line



# Clean Backfill from Off-Site for Stack Trench



# Final Grading Following Refill of Stack Piping Trench





# Downsizing Spare Turbine Casings for Transport



# Non-Rad Site Characterization/Remediation

---

## What else is happening?

- No new areas of impact identified. Remediation for AOC 5 & 7A complete, confirmatory surveys and sample analysis in progress.
- Additional Groundwater Wells installed with ANR's input to improve monitoring/data capture.
- Working with ANR for concurrence with meeting I-Rule Site Investigation completion criteria. All AOC & site investigation activities expected complete by end of May.
- Post Decommissioning Groundwater Monitoring Program per MOU still under development with ANR input.
- Continued collaboration through regular meetings with VT ANR, DEC to maintain alignment.

# Environmental Monitoring



Adding Monitoring Well South of Plant Complex



Adding Monitoring Well East of N Leach Field



Collecting Soil Samples



Collecting Well Samples SE of Plant Complex Along River

# Weekly Track Inspections



# Loading Steel Scrap Metal for Recycling



# Waste Loading & Transportation



# Shipping and Material Volumes

---

Currently shipping about 4-5 rail cars per week  
(Total shipments to date: 852)

- Total YTD Shipments (as of 5/01/24): 84
- Total Volume 2,368,075 ft<sup>3</sup> (87,706 yd<sup>3</sup>)
- Total Weight 104,754,436 lbs. (52,377 tons)
- Total Activity 35,675 curies

# Questions?

Target Zero (🚫 Accidents) Do It Right. Do It Safe.

